



eINSTRUCTION STUDENT RESPONSE SYSTEMS AND CASTLE LEARNING ONLINE

(800) 345-7606
support@castlelearning.com

The CPS feature in Castle Learning is available via the Teacher Assignments page. **NOTE: Assignments that have only multiple choice questions can be used with the student response systems.**

PREPARATION:

- **Browser**—The Safari browser on the PC is currently not compatible; Safari on the MAC is fully supported. If you experience difficulty using IE9 try Firefox or Chrome
- **Device Manager**—The eInstruction CPS devices work best with the latest version of Device Manager. If you are not using the current version and are experiencing any issues please download the latest version by clicking the **Documents** link from your **Teacher Center** within your Castle Learning account.
- **Silverlight**—[Download](#) onto the instructor's computer
- **eInstruction student response systems**—You'll need a set
- **Collection peripheral device**—Plug it into a USB port on the teacher's computer
- Depending on the choice of facilitating the assignment to students:
 - **Start Teacher Mode Assignment**—Project the assignment to a screen or interactive whiteboard
 - **Start Self-Paced Assignment**—Print a hard copy of the assignment for all students before starting
- **Assign each student a response system**—Use the same number for the same student every time (except in cases of an unusable clicker, then assign a new number).
Tip: Keep a period-by-period list to remind which number belongs to which student
- **Power**—Have students power up the student response systems

FACILITATING THE ASSIGNMENT WITH CLICKERS:

1. From the Teacher Home Page click on **Assignments**
2. Select the course where the assignment is located
3. Click on the **Start Assignment** icon to the right of the assignment in the **Actions** column



Current Short Answer Assignments

Students access these assignments from their Short Answer Activity pages. Click to view or change the students to whom you have give Click to view or modify an assignment. Click to start an assignment using the eInstruction CPS clickers.

	Assignment	Question Count	Date Created	Date Last Assigned	Complete / Assigned	Actions
<input type="checkbox"/>	01 Observation & Measurement Post-Test	15	05/26/11		0 / 0	

4. At the top of the screen, click on the drop down box to select a **Class**
5. Check the box next to the names of students who have devices. Do not check students who are not in the room or absent. The collection peripheral device is on your computer. It cannot collect data from outside the room.
6. Type in the correct clicker ID number that each student is holding. (Refer to your list created under the **PREPARATION** section above). The same clicker number will be populated in the box for you next time for this class - no need to re-enter unless it changes for that student.

Class: New Class

The following students are in this class. To start the CPS assignment assignment. If you do not want to restart any students that have already assignment is restarted any previously answered questions will be cleared.

[check all](#) [clear all](#)

	Last Name	First Name	Clicker ID
<input type="checkbox"/>	Bauer	Caitlin	1
<input type="checkbox"/>	Bauer	Justin	2
<input type="checkbox"/>	Bunker	Edith	3
<input type="checkbox"/>	Clapton	Eric	4
<input type="checkbox"/>	Fife	Barney	5

[check all](#) [clear all](#)

☐ Restart ☒ Allow Answer Changes

Start Teacher Mode Assignment

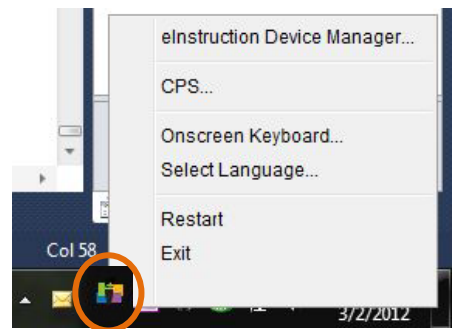
Start Self Paced Assignment

7. Options available **before** starting
 - Restart Assigned – check only if you want to clear all existing data and restart the assignment (students who have begun answering questions will lose their answers and will restart the assignment)
 - Allow Answer Changes – uncheck only if you DO NOT want students to have the ability to make changes to their answers once they have submitted their answer choice
8. To start the facilitation of the assignment, there are two method choices:
 - **Start Teacher Mode Assignment** - you will need to project the Castle Learning Assignment onto a screen or interactive whiteboard

OR

- **Start Self-Paced Assignment** –provide a printed copy of the assignment for all students. Students can answer questions at their own pace

NOTE: If you experience difficulty starting the assignment, click the eInstruction icon found in the lower right corner (PC) or upper right corner (MAC) and select Restart. If you can't locate the icon try removing the USB device and reinserting. If the eInstruction Device Manager is still not visible try restarting your machine. Also, check your anti-virus program to ensure that the device communications are not blocked. If you cannot communicate after making these changes, try adding the IP 127.0.0.1 to your Trusted Sites under IE Tools->Internet Options->Security tab.



TEACHER MODE ASSIGNMENT

- A check mark will appear under the question as each student answers. It does not indicate right or wrong, only that the question has been answered
- Be sure to click on **Stop Responses** if you do not want students to have the ability to continue changing their answers
- Click **Back** when finished. The results are saved.

SELF-PACED ASSIGNMENT

- Responses, Correct, and Incorrect turn green as a question is completed by all students
- A view at the bottom indicates if a student answered the question correctly (check) or incorrectly (X)
- This view should not be projected to a screen to keep student results private – this is viewed on the teacher's computer
- Click **Back** when finished. The results are saved.

